

**BALDOR • RELIANCE**

---

# Customer information packet

## CL3612TM

5HP, 1725RPM, 1PH, 60HZ, 184TC, 3646LC, TEFC

Class - None

Division - Not Applicable

## Specifications

Enclosure	TEFC
Frame	184TC
Frame Material	Steel
Frequency	60.00 Hz
Motor Letter Type	Cap Start, Cap Run
Output @ Frequency	5.000 HP @ 60 HZ
Phase	1
Synchronous Speed @ Frequency	1800 RPM @ 60 HZ
Voltage @ Frequency	208.0 V @ 60 HZ 230.0 V @ 60 HZ
XP Class and Group	None
XP Division	Not Applicable
Agency Approvals	UR CSA
Ambient Temperature	40 °C
Auxillary Box	No Auxillary Box
Auxillary Box Lead Termination	None
Base Indicator	Rigid
Bearing Grease Type	Polyrex EM (-20F +300F)
Blower	None
Current @ Voltage	23.000 A @ 230.0 V 23.600 A @ 208.0 V
Design Code	L
Drip Cover	No Drip Cover
Duty Rating	CONT
Efficiency @ 100% Load	80.0 %
Electrically Isolated Bearing	Not Electrically Isolated
Feedback Device	NO FEEDBACK
Front Face Code	Standard
Front Shaft Indicator	None
Heater Indicator	No Heater
High Voltage Full Load Amps	23.0 a

## Part detail

Revision	AV
Type	AC
Mech. spec.	36F189
Base	
Status	PRD/A
Elec. spec.	36WGW279
Layout	36LYF189
Eff. date	12-12-2023
CD Diagram	CD0152
Poles	04
Leads	2#10 A PH,3#16 B&J
Proprietary	False
Created date	01-01-0001

<b>Insulation Class</b>	F
<b>Inverter Code</b>	Not Inverter
<b>KVA Code</b>	J
<b>Lifting Lugs</b>	No Lifting Lugs
<b>Locked Bearing Indicator</b>	Locked Bearing
<b>Motor Lead Exit</b>	Ko Box
<b>Motor Lead Quantity/Wire Size</b>	2 @ 10 AWG, A PH
<b>Motor Lead Termination</b>	Flying Leads
<b>Motor Standards</b>	NEMA
<b>Motor Type</b>	3646LC
<b>Mounting Arrangement</b>	F1
<b>Number of Poles</b>	4
<b>Overall Length</b>	18.05 IN
<b>Power Factor</b>	88
<b>Product Family</b>	General Purpose
<b>Pulley End Bearing Type</b>	Ball
<b>Pulley Face Code</b>	C-Face
<b>Pulley Shaft Indicator</b>	Standard
<b>Rodent Screen</b>	None
<b>Service Factor</b>	1.00
<b>Shaft Diameter</b>	1.125 IN
<b>Shaft Extension Location</b>	Pulley End
<b>Shaft Ground Indicator</b>	No Shaft Grounding
<b>Shaft Rotation</b>	Reversible
<b>Shaft Slinger Indicator</b>	No Slinger
<b>Speed</b>	1725 rpm
<b>Speed Code</b>	Single Speed
<b>Starting Method</b>	Direct on line
<b>Thermal Device - Bearing</b>	None
<b>Thermal Device - Winding</b>	Do Not Use
<b>Vibration Sensor Indicator</b>	No Vibration Sensor
<b>Winding Thermal 1</b>	Manual Thermal Overload
<b>Winding Thermal 1 Location</b>	KO
<b>Winding Thermal 2</b>	None

**Nameplate**

<b>NP1257L</b>									
<b>CAT.NO.</b>	CL3612TM								
<b>SPEC.</b>	36F189W279								
<b>HP</b>	5								
<b>VOLTS</b>	208-230								
<b>AMP</b>	23.6-23								
<b>RPM</b>	1725								
<b>FRAME</b>	184TC			<b>HZ</b>	60		<b>PH</b>	1	
<b>SER.F.</b>	1.00	<b>CODE</b>	J	<b>DES</b>	L	<b>CL</b>	F		
<b>NEMA-NOM-EFF</b>	80	<b>PF</b>	88						
<b>RATING</b>	40C AMB-CONT								
<b>CC</b>									
<b>DE</b>	6206	<b>ODE</b>	6205						
<b>ENCL</b>	TEFC	<b>SN</b>							

**AC Induction Motor Performance Data**

Record # 31833

Preliminary Data Sheet

<b>Winding:</b> 36WGW279-R003		<b>Type:</b> 3646LC		<b>Enclosure:</b> TEFC	
<b>Nameplate Data</b>			<b>208 V, 60 Hz: Single Voltage Motor</b>		
<b>Rated Output (HP)</b>	5		<b>Full Load Torque</b>	15.1 LB-FT	
<b>Volts</b>	208-230		<b>Start Configuration</b>	direct on line	
<b>Full Load Amps</b>	23.6-23		<b>Breakdown Torque</b>	34.5 LB-FT	
<b>R.P.M.</b>	1725		<b>Pull-up Torque</b>	29.6 LB-FT	
<b>Hz</b>	60	<b>Phase</b>	1	<b>Locked-rotor Torque</b>	37.9 LB-FT
<b>NEMA Design Code</b>	L	<b>KVA Code</b>	J	<b>Starting Current</b>	146 A
<b>Service Factor (S.F.)</b>	1		<b>No-load Current</b>	6.67 A	
<b>NEMA Nom. Eff.</b>	80	<b>Power Factor</b>	88	<b>Line-line Res. @ 25°C</b>	0.349 Ω A Ph 1.42 Ω B Ph
<b>Rating - Duty</b>	40C AMB-CONT		<b>Temp. Rise @ Rated Load</b>	92°C	

**Load Characteristics 208 V, 60 Hz, 5 HP**

<b>% of Rated Load</b>	<b>25</b>	<b>50</b>	<b>75</b>	<b>100</b>	<b>125</b>	<b>150</b>
<b>Power Factor</b>	64	88	88	92	94	93
<b>Efficiency</b>	70.7	79.5	83.4	81.5	78.7	73.4
<b>Speed</b>	1784	1765	1743	1721	1697	1662
<b>Line amperes</b>	10.2	12.9	18.4	23.6	29.6	37.8

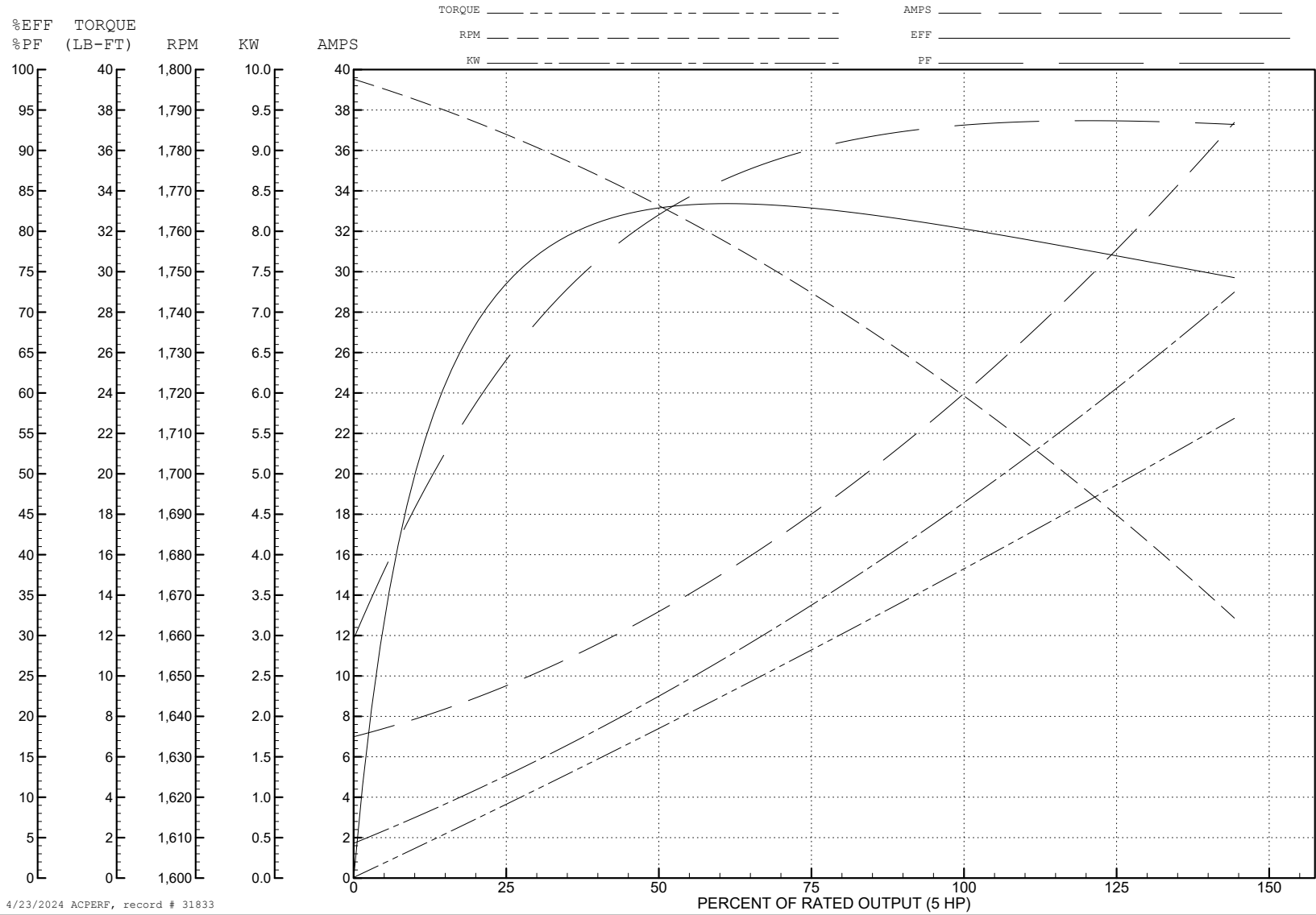
ABB Motors and Mechanical Inc.

WINDING # 36WGW279

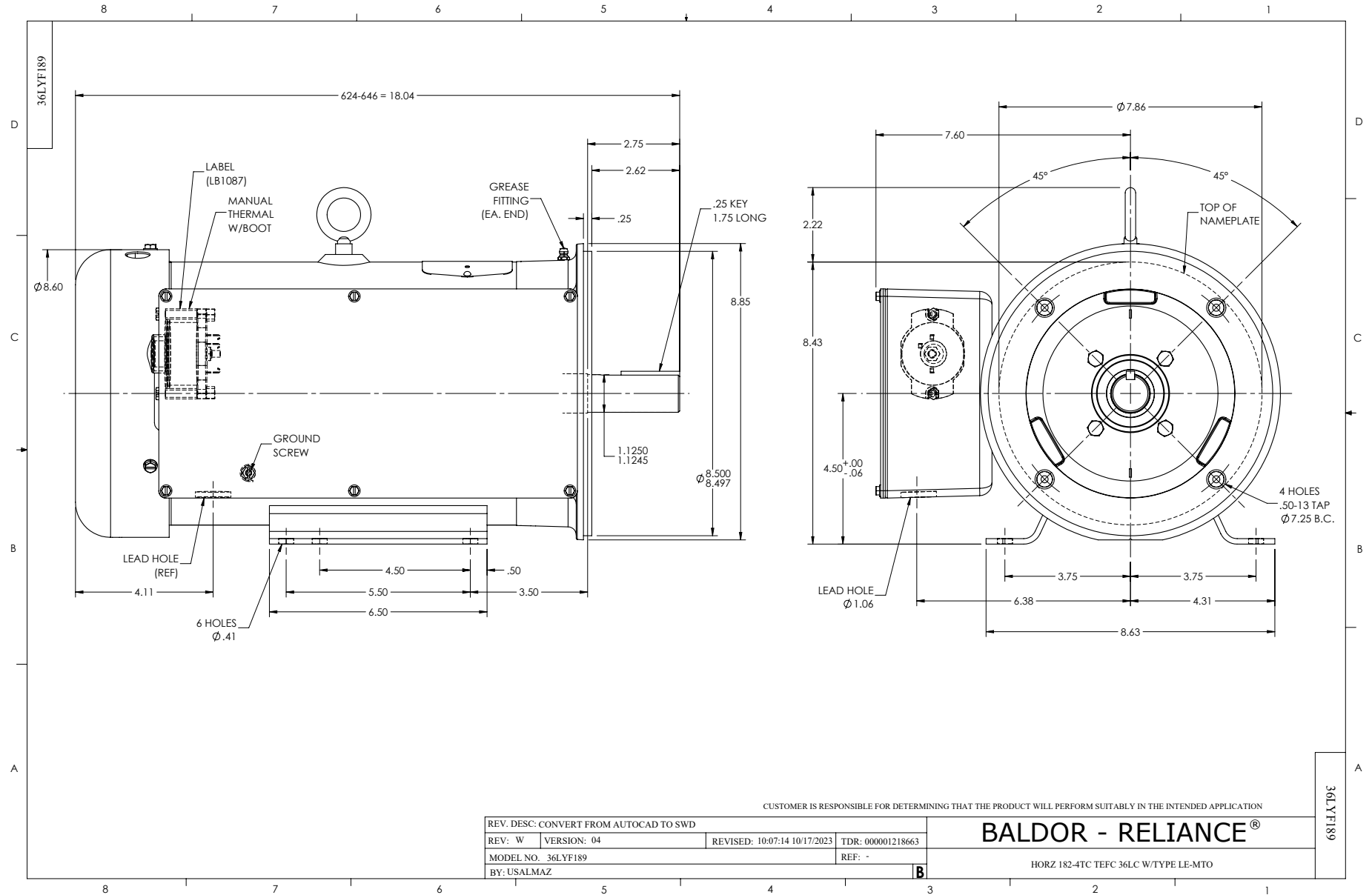
Typical performance - not guaranteed values.

5 HP 1 PH 60 HZ 1725 RPM 208 V 3646LC

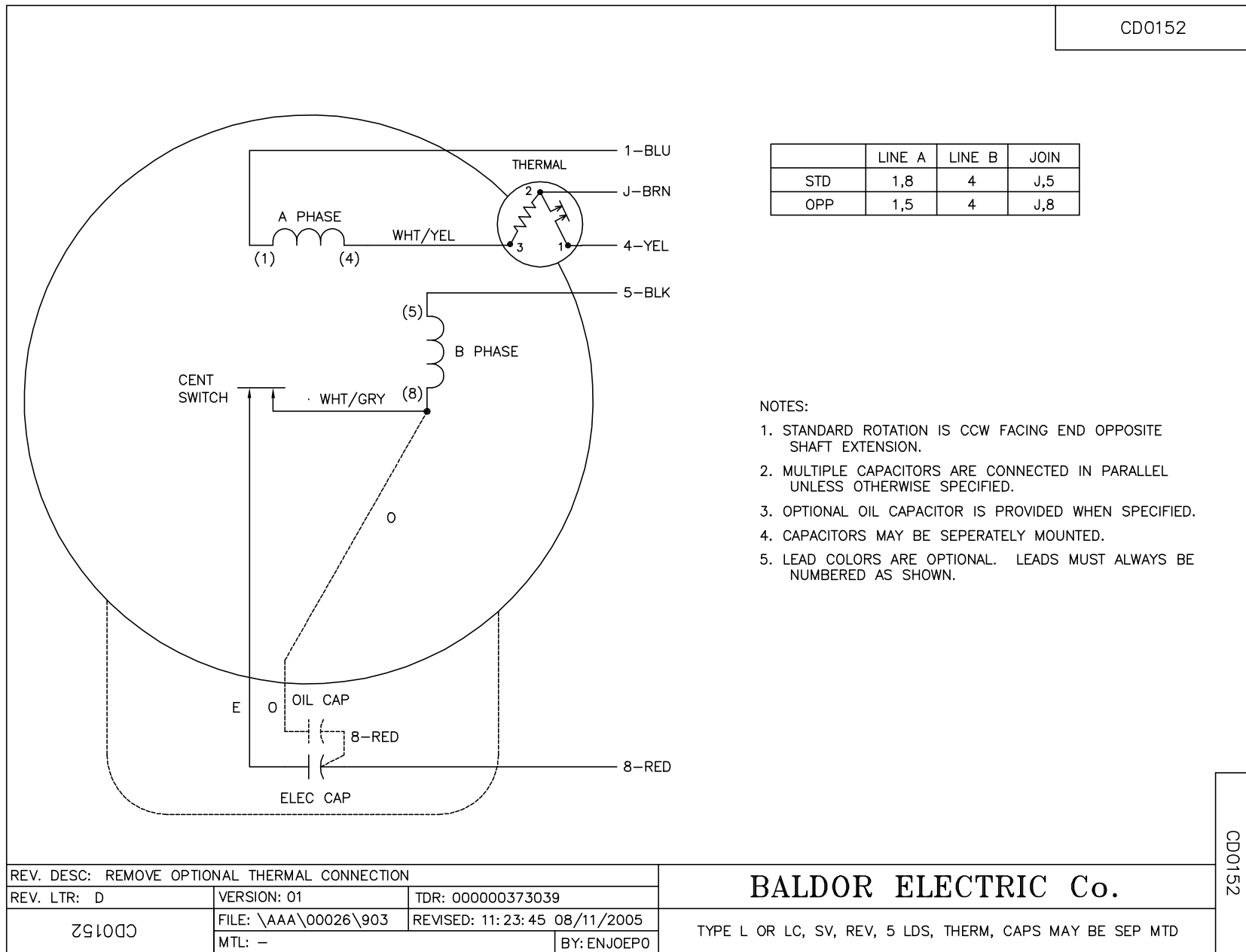
TORQUES (LB-FT): PO=34.5 PU=29.6 LR=37.9 LRA=146



4/23/2024 ACPERF, record # 31833



CD0152



REV. DESC: REMOVE OPTIONAL THERMAL CONNECTION		
REV. LTR: D	VERSION: 01	TDR: 000000373039
ZG100	FILE: \AAA\00026\903	REVISED: 11: 23: 45 08/11/2005
	MTL: -	BY: ENJOEPO

**BALDOR ELECTRIC Co.**

TYPE L OR LC, SV, REV, 5 LDS, THERM, CAPS MAY BE SEP MTD

CD0152